



POOL COPINGS

12 UNIQUE AESTHETIC OPTIONS

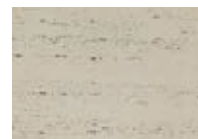
TRAVERTINA RAW NEW

cap collection



ivory

IVORY



ROCK
GARDEN
BROWN



RIVIERA



TRAVERTINA RAW CAP 14 × 28



(H × D × L)

57 × 356 × 711 mm 2 ¼ × 14 × 28 in

17.07 lin. m/pal 56 lin. ft./pal

24 units

TRAVERTINA RAW CAP 12 × 30



(H × D × L)

57 × 298 × 762 mm 2 ¼ × 11 ¾ × 30 in

24.38 lin. m/pal 80 lin. ft./pal

32 units

TONE
DISTRIBUTION
MEDIUM

Stonedge
COLLECTION



For an authentic look, each color option is composed of a variety of darker & lighter tones. Natural ingredients are present within the recipe to allow for a range in tones, veining and textures from one stone to another. Color samples for reference only. Actual product colors may vary.

NEW **BALI TRAVERTINA RAW**
pool coping



IVORY



ROCK
GARDEN
BROWN



RIVIERA



BALI TRAVERTINA



(H1 × H2 × D × L)
57 × 70 × 305 × 406 mm 2 ¼ × 2 ¾ × 12 × 16 in
11.38 lin. m/pal 37.33 lin. ft./pal
28 units/pal



■ ■ ■ TONE
■ ■ ■ DISTRIBUTION
■ ■ ■ MEDIUM



Stonedge
■■■ COLLECTION



ivory

For an authentic look, each color option is composed of a variety of darker & lighter tones. Natural ingredients are present within the recipe to allow for a range in tones, veining and textures from one stone to another. Color samples for reference only. Actual product colors may vary.

BULLNOSE

cap & pool coping

onyx black



SANDLEWOOD



CHESTNUT
BROWN



MOJAVE
BEIGE



HARVEST
GOLD



CHAMPLAIN
GREY



SHALE GREY



CHOCOLATE
BROWN*



ONYX BLACK*



BULLNOSE



(H × D × L)

60 × 305 × 150 mm

2 3/8 × 12 × 5 7/8 in

27 lin. m/pal

88.60 lin. ft./pal

180 units/pal

* 13.50 lin. m/half pal

* 44.30 lin. ft./half pal

* 90 units/half pal

*Onyx black and chocolate brown are sold inskid quantities.



For an authentic look, each color option is composed of a variety of darker & lighter tones. Natural ingredients are present within the recipe to allow for a range in tones, veining and textures from one stone to another. Color samples for reference only. Actual product colors may vary.

BULLNOSE GRANDE

cap & pool coping



GREYED NICKEL



BEIGE CREAM



greyed nickel



BULLNOSE GRANDE



(H × D × L)

56 × 357 × 750 mm 2 ³/₁₆ × 14 ¹/₁₆ × 29 ¹/₂ in

9 lin. m/pal 29.53 lin. ft./pal

12 units



For an authentic look, each color option is composed of a variety of darker & lighter tones. Natural ingredients are present within the recipe to allow for a range in tones, veining and textures from one stone to another. Color samples for reference only. Actual product colors may vary.

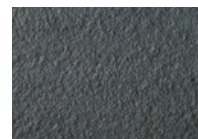
PIEDIMONTE

double-sided cap collection

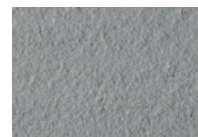
riviera



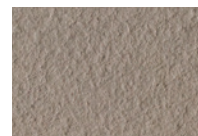
ONYX BLACK



RIVIERA



ROCK GARDEN
BROWN



PIEDIMONTE 12"×30" WALL CAP



(H × D × L)

57 × 298 × 762 mm 2 ¼ × 11 ¾ × 30 in
24.39 lin. m/pal 80 lin. ft./pal
32 units

PIEDIMONTE 14"×30" WALL & STEP CAP



(H × D × L)

57 × 356 × 762 mm 2 ¼ × 14 × 30 in
18.29 lin. m/pal 60 lin. ft./pal
24 units

TONE ■ ■ ■
 DISTRIBUTION ■ ■ ■
 HIGH ■ ■ ■

Stonedge
■■■ COLLECTION



For an authentic look, each color option is composed of a variety of darker & lighter tones. Natural ingredients are present within the recipe to allow for a range in tones, veining and textures from one stone to another. Color samples for reference only. Actual product colors may vary.

PORTOFINO

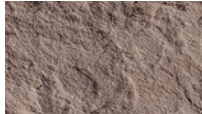
double-sided cap



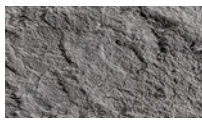
BAJA BEIGE



ROCK GARDEN
BROWN



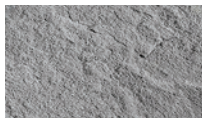
CHOCOLATE
BROWN



ONYX BLACK



AZZURRO



RIVIERA



PORTOFINO



(H × D × L)

A 57 × 368 × 298 × 238 mm

2 ¼ × 14 ¼ × 11 ¾ × 9 ½ in

B 57 × 368 × 403 × 349 mm

2 ¼ × 14 ¼ × 15 ¾ × 13 ¾ in

C 57 × 368 × 478 × 419 mm

2 ¼ × 14 ¼ × 18 ¾ × 16 ½ in

D 57 × 368 × 483 × 483 mm

2 ¼ × 14 ¼ × 19 × 19 in

15.30 lin. m/pal

50.22 lin. ft./pal

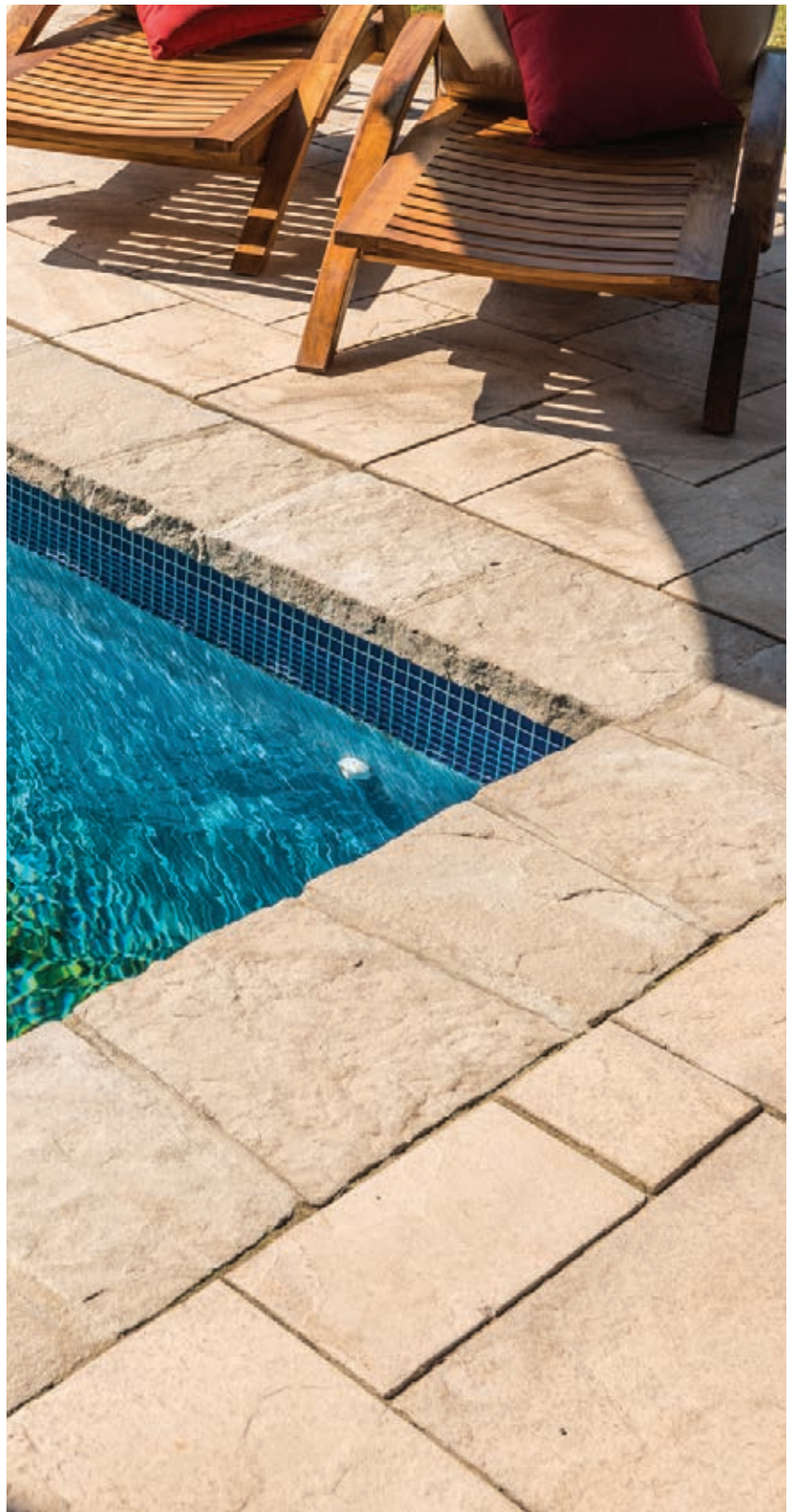
Tapered units facilitate curves.



TONE
DISTRIBUTION
MEDIUM



Stonedge
COLLECTION



polished greyed nickel

For an authentic look, each color option is composed of a variety of darker & lighter tones. Natural ingredients are present within the recipe to allow for a range in tones, veining and textures from one stone to another. Color samples for reference only. Actual product colors may vary.

RAFFINATO

cap collection

60 mm greyed nickel



GREYED
NICKEL



BEIGE CREAM



ONYX BLACK



CHAMPLAIN
GREY



CHESTNUT
BROWN



SANDLEWOOD



SHALE GREY



RAFFINATO CAP 90MM



(H × D × L)

90 × 356 × 711 mm 3 5/8 × 14 × 28 in

17.07 lin. m/pal 56 lin. ft./pal

24 units

RAFFINATO CAP 60MM



(H × D × L)

60 × 356 × 711 mm 2 3/8 × 14 × 28 in

17.07 lin. m/pal 56 lin. ft./pal

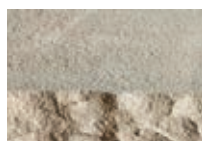
24 units



For an authentic look, each color option is composed of a variety of darker & lighter tones. Natural ingredients are present within the recipe to allow for a range in tones, veining and textures from one stone to another. Color samples for reference only. Actual product colors may vary.

YORK

cap collection



IVORY



ONYX BLACK



RIVIERA



CHOCOLATE BROWN



ROCK GARDEN BROWN



YORK WALL CAP 14"×48"



(H × D × L)

57 × 356 × 1 219 mm 2 ¼ × 14 × 48 in

14.63 lin. m/pal 48 lin. ft./pal

12 units

YORK WALL CAPS 16", 32" & 48"



(H × D × L)

57 × 356 × 406 mm 2 ¼ × 14 × 16 in

57 × 356 × 813 mm 2 ¼ × 14 × 32 in

57 × 356 × 1 219 mm 2 ¼ × 14 × 48 in

14.63 lin. m/pal 48 lin. ft./pal

6 units of each



ivory

For an authentic look, each color option is composed of a variety of darker & lighter tones. Natural ingredients are present within the recipe to allow for a range in tones, veining and textures from one stone to another. Color samples for reference only. Actual product colors may vary.

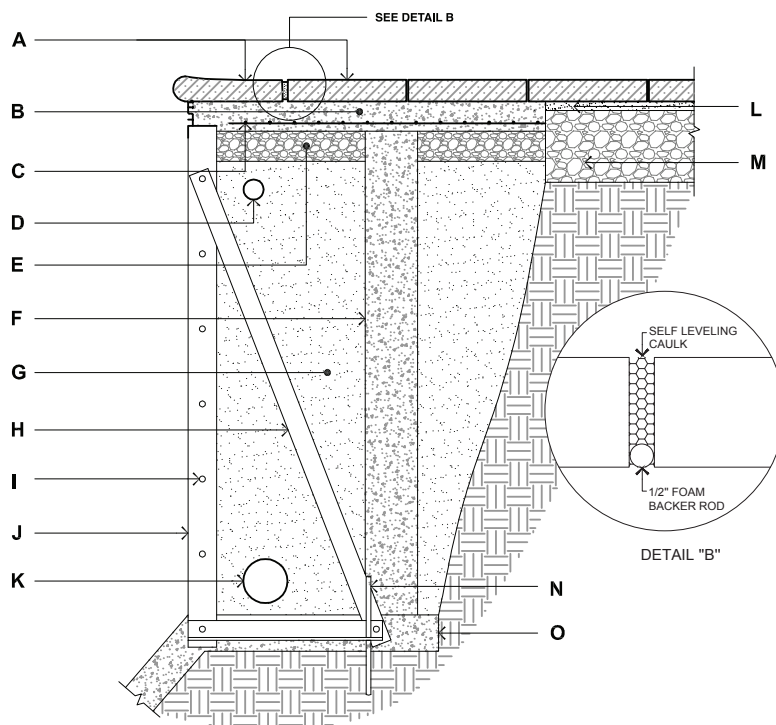
OFFERING YOU A COMPLETE COLLECTION

They say good design is found at the core, but great design is in the details. Techo-Bloc caps and pool copings are the finishing touch to any landscape project. Offered in a large array of colors, finishes and shapes, each cap serves many purposes and matches Techo-Bloc's collection of slabs and decorative walls to complete an outdoor project. See the Compatibility Chart to see which caps best fit your application.

COMPATIBILITY CHART

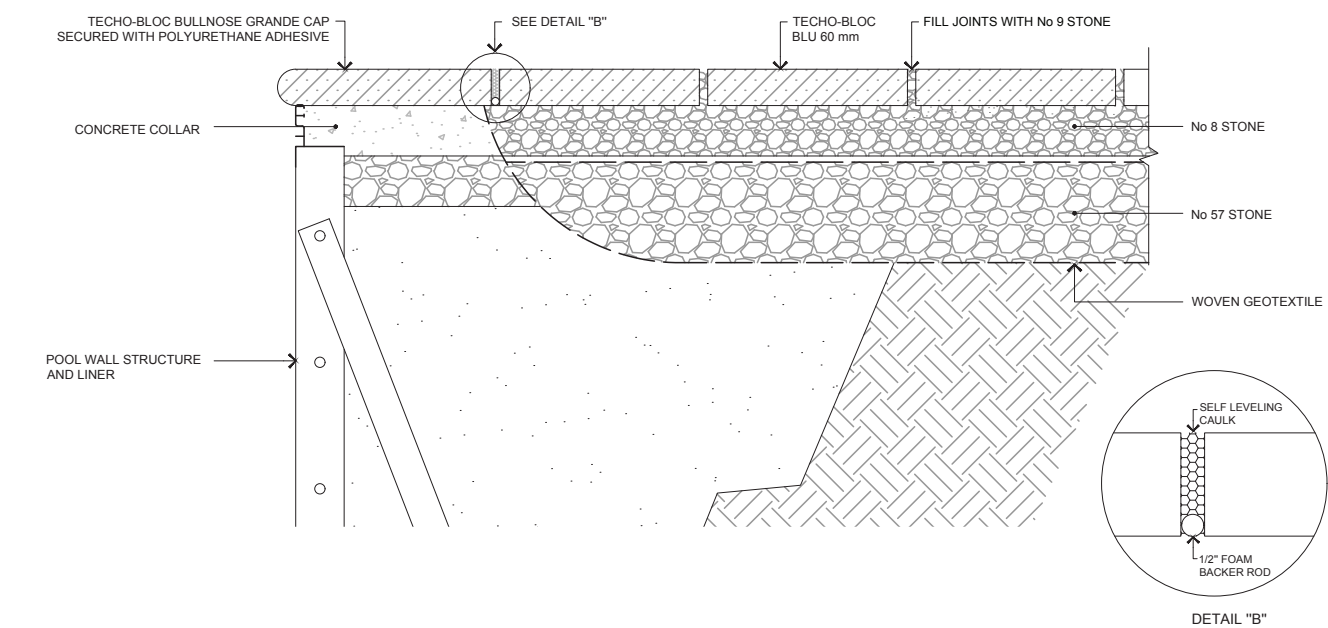
| APPLICATIONS | PRODUCTS | | | | | | | | | | |
|-------------------|-------------------------|------------------------------|------------------------------|----------|-----------------|-------------------------------|--------------------------------------|---------------|---------------------|---------------------|------------------------------|
| | BALI TRAVERTINA RAW CAP | TRAVERTINA RAW CAP 14" x 28" | TRAVERTINA RAW CAP 12" x 30" | BULLNOSE | BULLNOSE GRANDE | PIEDIMONTE 12" x 30" WALL CAP | PIEDIMONTE 14" x 30" WALL & STEP CAP | PORTOFINO CAP | RAFFINATO CAP 60 MM | RAFFINATO CAP 90 MM | YORK WALL CAPS 16", 32", 48" |
| Step | ● | ● | ● | ● | ● | ● | ● | ● | ● | ● | ● |
| Pool coping | ● | ● | ● | ● | ● | ● | ● | ● | ● | ● | ● |
| Wall single-sided | ● | ● | ● | ● | ● | ● | ● | ● | ● | ● | ● |
| Wall double-sided | ● | ● | ● | ● | ● | ● | ● | ● | ● | ● | ● |
| Counter top | | | | | | ● | | | | | ● |
| Overlay system | | | | | | | | ● | | | |
| Pillar | ● | | | | | | | | ● | | |

POOL COPING INSTALLATION (ON CONCRETE BASE)

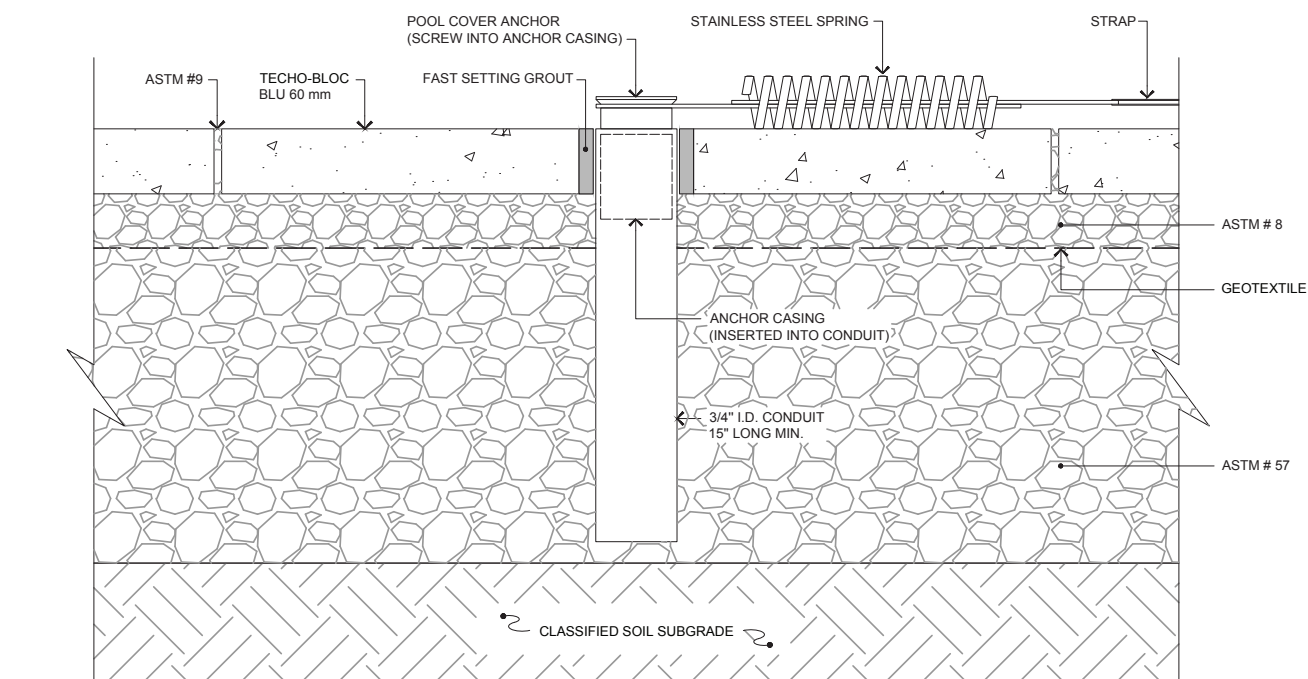


- A. TECHO-BLOC POOL COPING AND PAVER SECURED TO CONCRETE SLAB WITH ADHESIVE OR MORTAR
- B. CONCRETE DECK 39" (1 m) WIDE BY 4" (100 mm) THICK MIN.
- C. WELDED WIRE MESH, 6 X 6 - W1.4/W1.4 (152 X 152 MW9.1 X MW9.1)
- D. FLEXIBLE PIPE, 1 1/2" (40 mm) DIAM.
- E. CLEAN STONE 3/4" (20 mm), 2" (50 mm) THICK MIN.
- F. CONCRETE PILLAR, 6" (150 mm) DIAM.
- G. SAND BACKFILL
- H. STRUT
- I. POOL PANEL
- J. POOL LINER
- K. PERFORATED DRAIN, 4" (100 mm) DIAM. WRAPPED WITH A GEOTEXTILE
- L. BEDDING COURSE, 1" (25 mm)
- M. COMPACTED GRANULAR BASE 0-3/4" (0-20 mm) (see table page 242 for thickness)
- N. STEEL ROD 3/8" (10 mm) ANCHORED TO SUBGRADE
- O. CONCRETE FOOTING, 4" (100 mm) THICK MIN.

POOL COPING INSTALLATION (ON PERMEABLE BASE)



POOL COVER ANCHOR INSTALLATION



LEGEND

- TECHO-BLOC WARRANTY
- STONEDGE WARRANTY
- DE-ICING SALT RESISTANT
- DO NOT USE DE-ICING SALT
- SALINE POOL CERTIFIED
- STONE TO STONE TONE DISTRIBUTION



USA

PENNSYLVANIA

852 W. Pennsylvania Avenue,
Pen Argyl, PA 18072

PENNSYLVANIA

23 Quarry Road, Douglassville, PA 19518

MASSACHUSETTS

70 East Brookfield Rd., North Brookfield, MA
01535

NORTH CAROLINA

5135 Surret Drive, Archdale, NC 27263

OHIO

97 Industrial Street,
Rittman, OH 44270

ILLINOIS

3401, 85th Avenue West,
Rock Island, IL 61201

ILLINOIS

24312 W. Riverside Dr,
Channahon, IL 60410

INDIANA

2397 County Road 27,
Waterloo, IN 46793

CANADA

MONTREAL

5255 Albert-Millichamp street,
Saint-Hubert, QC J3Y 8Z8

OTTAWA

6310 Hazeldean Road - P.O. Box 1791,
Stittsville, ON K2S 1B4

TORONTO

10 Freshway Drive, Vaughan, ON L4K 1S3

TORONTO

1050 Industrial Road, Ayr, ON N0B 1E0

-
- **DE-ICING SALT RESISTANT**
 - **STRENGTH & DURABILITY**
 - **TRANSFERABLE LIFETIME WARRANTY**
 - **COLOR THROUGH & THROUGH**

TOLL FREE:

1.877.832.4625

WWW.TECHO-BLOC.COM

PROUD MEMBER OF

